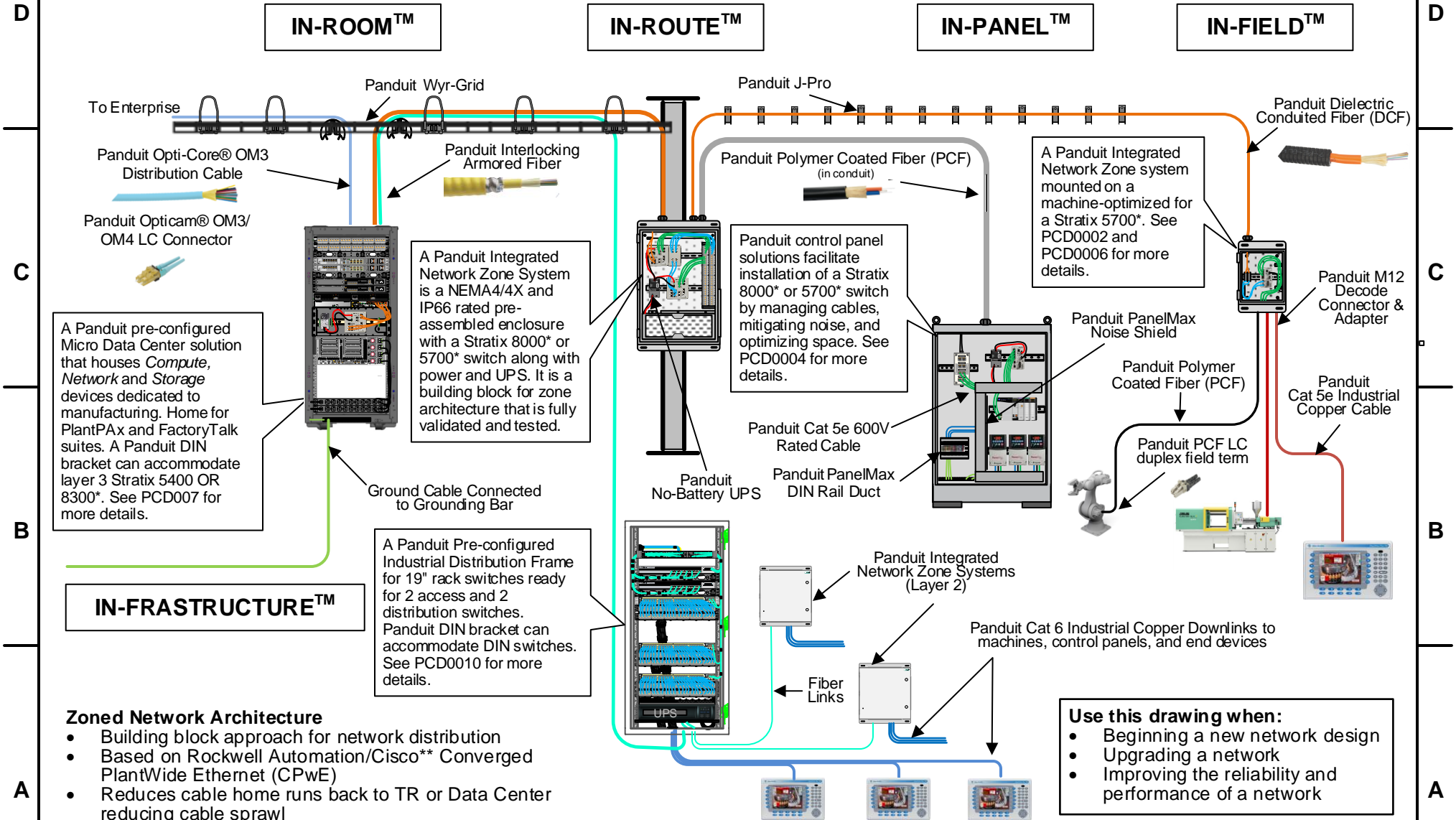


A typical industrial network deployment encompasses Panduit's 5 "IN" solutions.
 A Stratix switch can be deployed in a Micro Data Center, Zone Enclosure, Industrial Distribution Frame, Control Panel, or on a Machine



Zoned Network Architecture

- Building block approach for network distribution
- Based on Rockwell Automation/Cisco** Converged PlantWide Ethernet (CPwE)
- Reduces cable home runs back to TR or Data Center reducing cable sprawl
- Improved scalability and future ready

Use this drawing when:

- Beginning a new network design
- Upgrading a network
- Improving the reliability and performance of a network

* Stratix 8003, Stratix 8000, and Stratix 5700 are trademarks of Rockwell Automation, Inc.
 ** Cisco is a registered trademark of Cisco Technology Inc.

Bill of Materials

Part Number	Description
Micro Data Centers	
MDC79D	42 RU pre-configured industrial micro data center, 78.1" (1984mm) height, network cabling, 4 casters, and shock pallet
MDC48D	24 RU pre-configured industrial micro data center, 48.4" (1239mm) height, network cabling, 4 casters, and shock pallet
IABDIN4	IA bracket for 19" wide rack or cabinet. Installs DIN rail mountable equipment. 4 RU height
Integrated Network Zone System/Industrial Distribution Frame	
Z23N*****	Integrated network zone system. 24" x 36", mild steel enclosure
Z22N*****	Integrated network zone system. 24" x 24", mild steel enclosure
Z11N*****	Integrated network zone system. 12" x 14", mild steel enclosure
ZDF48-RA	Pre-configured industrial distribution frame ready for 2 access and 2 distribution switches
Control Panel	
UPS003024024015	Uninterruptible Power Supply (UPS). 35 watts for 5 minutes, 24VDC in/out, DIN rail mount
SD3EMI	EMI noise shield kit for 3" height Panduit wiring duct
DRD33LG6	3" height PanelMax DIN rail wiring duct
Cabling, Connectors, and Pathways	
FODRX12Y	12-fiber MM OM3, 10 GbE, riser rated distribution cable
FI2D204	4-fiber MM OM2, polymer-coated fiber (PCF), LSZH, riser indoor break-out
FLCDHMIG	PCF LC duplex crimp fiber optic connector, OM1/OM2
FSPD512	12-fiber OM2 dielectric (MM) armored distribution cable
FOPRX12Y	12-fiber OM3 (MM) interlocking riser rated armored cable
FLCDMCXAQY	LC OM3/OM4 multimode duplex connector for 900µm
PUR6004BU-UY	Cat 6, solid copper, 4-pair, UTP, CMR riser, PVC jacket
IUC6C04ABL-CEG	Cat 6, industrial copper stranded, 4-pair, U/UTP
ISPS688FA	Cat 6a, industrial field term, RJ45 plug
ISFCH5C02ARD-XG	Cat 5e, industrial copper stranded, 2-pair, SF/UTP, CM, 600V
ICAM12DRJS	Industrial panel mount M12 D-code female to RJ45 adapter
ISPS5E44MFA	Industrial field attachable M12 D-code male plug
ISTPHCH1MTL	600V rated, Cat 5e patch cord, 1 meter length
JP2SBC50-L20	J-Hook with screw-on beam clamp
WG12BL10	12" W x 10' L Wyr-Grid pathway section

For More Information

For more information, contact your local distributor, Panduit Sales Representative, or Rockwell Automation Sales Representative. www.panduit.com/ia ia@panduit.com

About this Configuration

Panduit has the complete end-to-end products and solutions to deploy a robust, secure, and future-ready industrial network. The 5 IN's group Panduit products and address the different aspects of a network deployment.

IN-ROOM (Micro Data Center)

The Micro Data Center (MDC) is the hub of a network deployment containing servers, switches, and other active gear.

- Preconfigured micro data center cabinet with cabling
- Different sized network/server racks and cabinets
- Patching and cable management
- Network physical security
- Identification and color coding
- Grounding and power

IN-ROUTE

Solutions and products to connect MDC, switches, controllers, and other active gear.

- Integrated Network Zone System including switch
- Pre-configured Industrial Distribution Frame (IDF)
- Industrial pathways like J-Hooks and Wyr-Grid
- Full line of industrial copper and fiber cable

IN-PANEL

A full set of products to accommodate any panel design for both new and retrofits, especially sensitive network cabling.

- Cable management and protection
- Connectors and terminals
- EMI protection
- Space optimization
- Networking
- Labeling

IN-FIELD

Products to manage cabling in a harsh environment.

- Integrated Network Zone System
- Harsh cable protection and bundling
- Harsh connectors and terminals
- Safety and identification

IN-FRASTRUCTURE

Products to distribute power and grounding, including safety and identification.

- Power terminals
- Ground distribution
- LOTO and labeling

